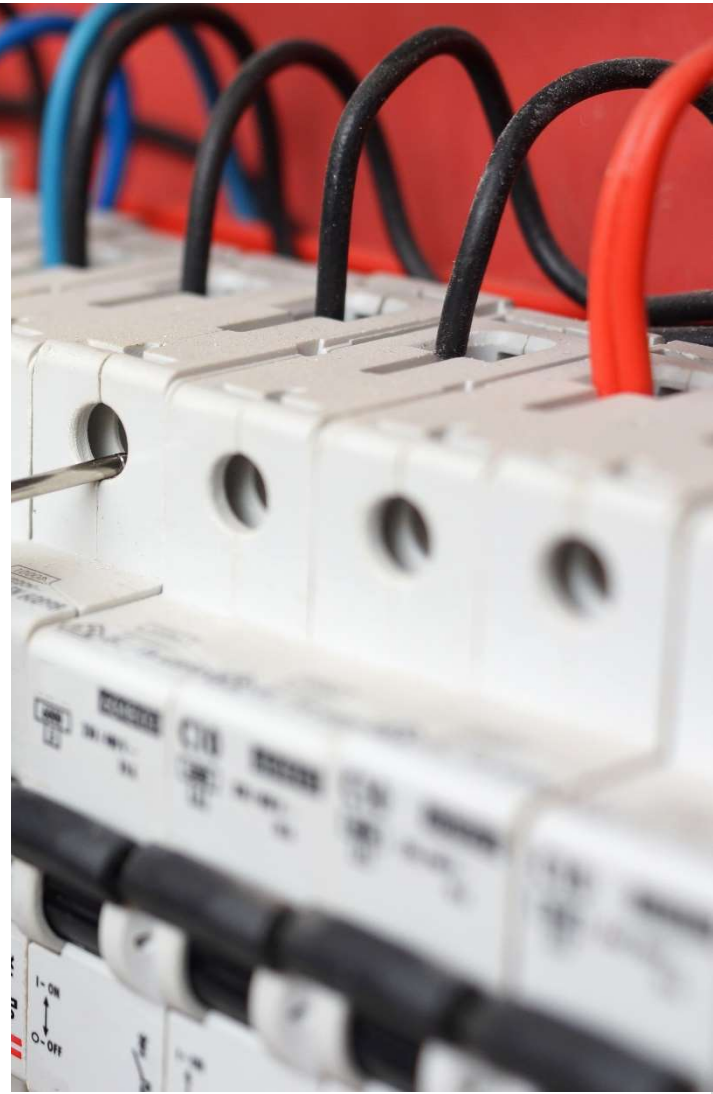


# CAPABILITY STATEMENT

---



**AKA Electrical & Automation Pty Ltd**

[info@akaea.com.au](mailto:info@akaea.com.au)

07 3142 0109

[www.akaea.com.au](http://www.akaea.com.au)

**2021**

---

## Company Overview

AKA Electrical & Automation Pty Ltd is a company focused on Industrial Electrical Installation/Construction and Machine Plant Automation in the following market sectors:

- Manufacturing
- Packaging
- Food and Beverage
- Water Treatment
- Pharmaceuticals

We offer complete electrical solutions incorporating Electrical Design, Switchboard Design and Construction, Sourcing of Instrumentation and Control Equipment, Electrical Installation, PLC, HMI and SCADA Programming and Plant Commissioning.

We pride ourselves to be able to provide our customers with expertise technical advice and innovation.

## Our Values

### **Solution Focused**

We concentrate on identifying and implementing solutions for your business.

### **Customer Satisfaction**

We strive to exceed your expectations.

### **Safe Working Practices**

Our employees are trained in the latest industry of safety standards across all processes we carry out.

### **Reliability & Integrity**

We deliver on what we say and being there when you need us.

### **Quality Workmanship**

Constructing and installing with quality materials and design.

### **Affordability**

Our services come at a reasonable price.

## **Electrical & Engineering Services**

### **PLC & SCADA Services**

AKA Electrical & Automation can improve productivity and protect your technology with PLC upgrades. Improvements to PLC programming, integration of upgrades or modifications to existing plant and machinery

- PLC Upgrade & Modifications
- PLC Software Design
- SCADA system design
- Control system design and implementation
- Factory and site acceptance testing
- HMI Design
- Commissioning

### **Industrial Services & Maintenance**

AKA Electrical & Automation support our customers covering preventative, routine, and breakdown services & maintenance.

- Industrial breakdowns
- Onsite maintenance contracts
- Building & factory maintenance
- Test & Tag appliances
- Power relocation

### **Electrical Installations**

AKA Electrical & Automation can assist with all types of electrical installations

- Installation of industrial plants
- Installation and integration of robotic automation
- Process and control system installations
- Electrical breakdowns and maintenance
- Switchboard Upgrade
- Data Points
- High bay lighting replacement and repairs

### **Safety Systems**

AKA Electrical & Automation can implement safety systems to help reduce accidents in the workplace. Some of the systems we work with is SICK & Omron light curtains, gate locks, implementing safety systems on old and new machinery

## Electrical & Engineering Services

### Construct & Upgrade Switchboards

- Design and construct of control cabinets, MCC's and distribution boards

### Machine Plant Automation

- Machine Automation
- Robotic Integration



### ARC Flash Investigation

AKA Electrical & Automation has assisted Utility Companies to assist with Arc Flash Investigations

- Assisted project team with field related technical issues including attending sites as required
- Assisted project team with data collection & collation regarding site information and drawings. This involve finding errors in the current data and working with project team to resolve
- Assisted project team to populate data within Database for assets

## Projects

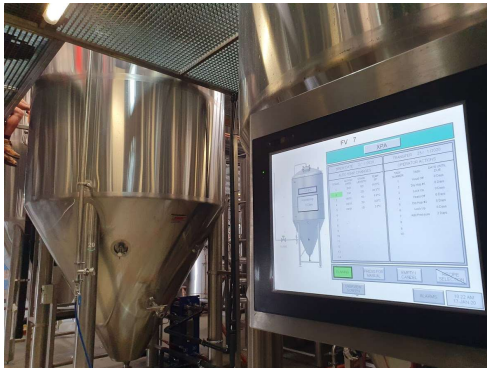
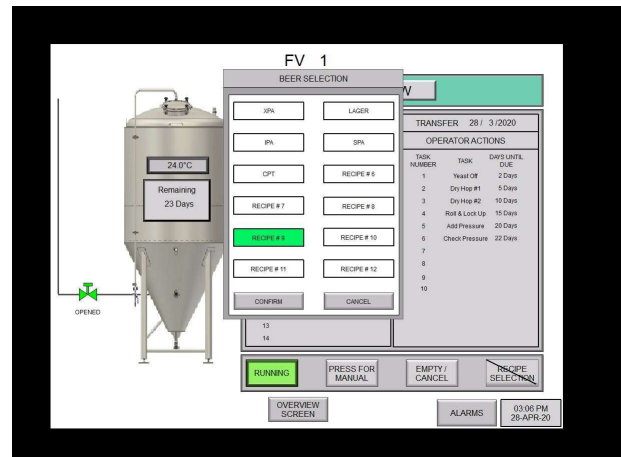
### Micro Breweries

#### Automated temperature profiles for the fermentation vessels

Instead of using a whiteboard we implemented a touch screen (HMI screen) Allows you to make receipts and save them and set them to the vessels. There is also ability for reminders to be set up for any recipe task that are required e.g. add yeast or add hops or lock up vessel

#### Brewery expansion of fermentation and Bright Beer

Integrated new vessels into the existing touch screen and control system – original equipment from DME



#### Remote access

Utilising a Tosibox lock we have been able to give secure remote access using VPN for our customers – this allows them to use mobile devices or table to mimic the touch screen on site from any location remotely using internet access

#### Glycol bypass valve control system

Integrated an automated glycol bypass valve to provide increased glycol efficiency. This system allowed operators to input the required differential pressure value for the glycol line then the control system would automatically adjust the glycol bypass valve position to maintain this desired pressure.

Keeping a steady line pressure with an ever-changing glycol demand boosted **cooling performance and consistency**

## **Concrete Sleeper Manufacturers**

### **Safety Upgrade**

Integrated safety controllers consisting of Allan Bradley & Omron. Complete design, installation and integration of Domino Stations, Safety Lanyards, Light Curtains and Upgrades of VSD.

### **Dosing Head Upgrade**

Design & construction of control panel, Installation, and programming of new VSD, conveyor rearrangement, load cell installation, sequence programming & Commissioning

### **Dosing Machine Automation System**

Design and commissioning of the electrical and control system for the new dosing machine

## **Industrial Manufacturing**

### **Speed Sleeve Automation**

Complete design and electrical installation. Omron control system & robot programming

## Management System

**AKA Electrical & Automation Pty Ltd is committed to:**

- Ensuring a safe workplace for employees
- Continually improving safety performance

**AKA Electrical & Automation is a member of Masters Electricians Australia that assists us to improve our management systems, including**

- Workplace Health and Safety Policy
- Quality Management Plan
- Safety Management Plan
- Environmental Management Plan

## Company Details

ABN:	15 622 689 865
Electrical Licence Number:	83864
Phone:	07 3142 0109
Email:	<a href="mailto:info@akaea.com.au">info@akaea.com.au</a>
Website:	<a href="http://www.akaea.com.au">www.akaea.com.au</a>
Head Office:	Unit 5, 115 Robinson Road Geebung QLD 4034
Business Structure:	Private Company

